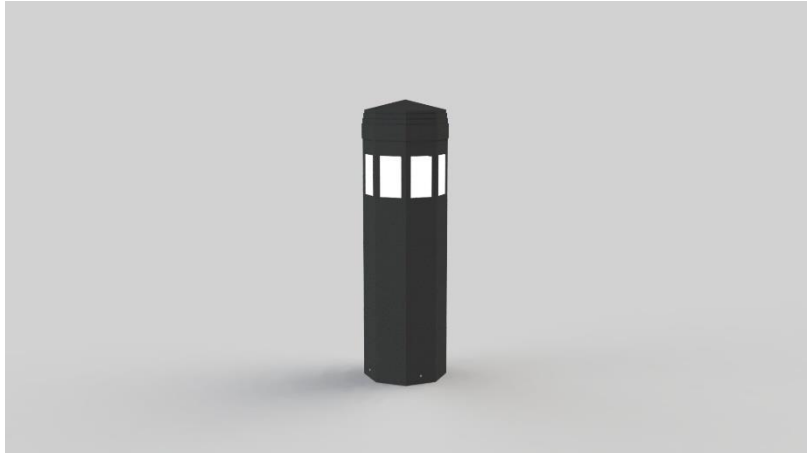


Date:

Type:

Project:



**VELA BOLLARD**

Neo-classic design that features an octagonal housing made from aluminum extrusion with light emanating from all sides. This is a design family available in different mounting versions.

Standard height is 42". Contact Solera for custom height, finishes, and dimensions.

Name	Lamping*	Lumens*	Color Temp	Electrical		Mounting	
VELA-BLD	48W LED	7900	5000K 4000K 3500K 3000K	UNV HLV	120-277V 347-480V	ABT	Anchors, bolts, & template
Contact for custom height & width				Contact Solera for other mounting options			

Lens		Light Pattern		Options		Finishes	
FG	Frosted lens (Std)	TY5	Type V distribution	DM TP/TS GFR PC	0-10v dimming Tamperproof Hardware & screw Ground fault receptacle Button photocell, Voltage specific	BL WH SG BZ	Black White Silver Grey Bronze
						CC	Custom Color

[See finishes info on website](#)

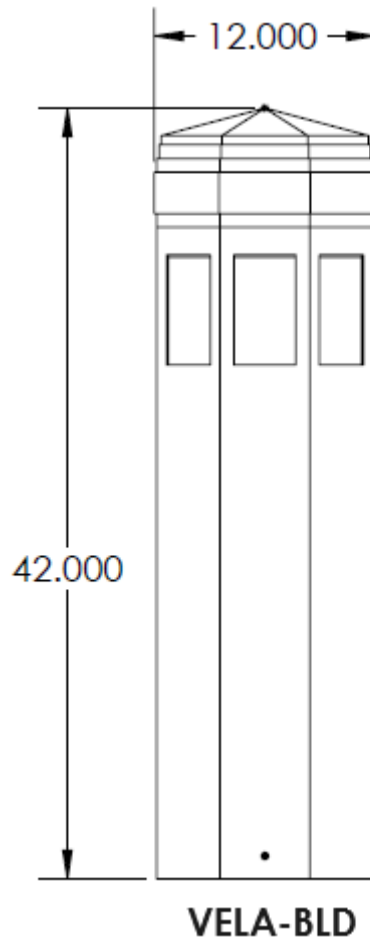
\*Lumens are based on Max Wattage and 5000K CCT  
 \*Specific IES Files available upon request  
 Std – Standard Offering

**VELA-BLD-** \_\_\_\_\_

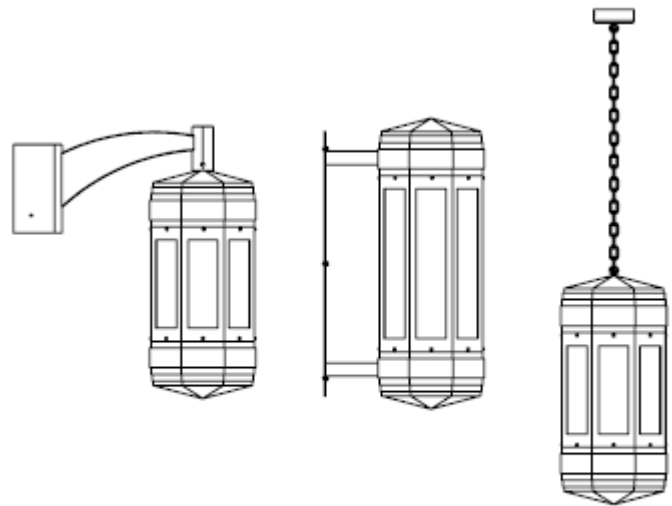
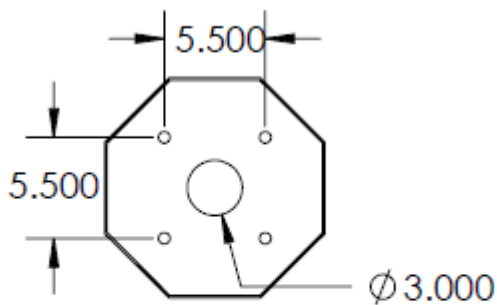
**Customization Notes:**

▶▶▶ Info on this spec sheet will change without notice as product development is an ongoing process.

**Dimensions & Mounting** (measurements in inches; drawings are not to scale)



**MOUNTING DETAILS:**



**Anchorbolt Size:** 1/2" X 12" X 1-3/8"

- Hot dipped Galvanized anchor bolts
- Galvanized steel hex nuts
- Galvanized steel flat washers

**AVAILABLE IN POLE MOUNT, WALL MOUNT AND PENDANT VERSION**