

Date:

Type:

Project:

**PAC-BLD BOLLARD**

The small bollard that is 28" high. Made from 6061-T6 aluminum extrusion, it has an optical assembly that features an inconspicuous downlight.



Name	Lamping*	Lumens*	Color Temp	Electrical		Mounting
PAC-BLD	10 W LED (max)	706	5000K 4000K 3500K 3000K	UNV HLV	120-277V 347-480V	ABT Anchors, bolts, & template
			Contact for other wattages		Contact for other mounting options	

Lens		Light Pattern		Options		Finishes	
CPL	Clear polycarbonate lens (Std)	TY2	Type II Distribution (Std)	TP/TS DM GFR PC BC 2T	Tamperproof hardware & screws 0-10V dimming Ground fault receptacle Button photocell, Voltage specific Base cover Two different color finishes for top & shaft	BL WH SG BZ CC	Black White Silver Grey Bronze Custom Color
							<a href="#">See finishes info on website</a>

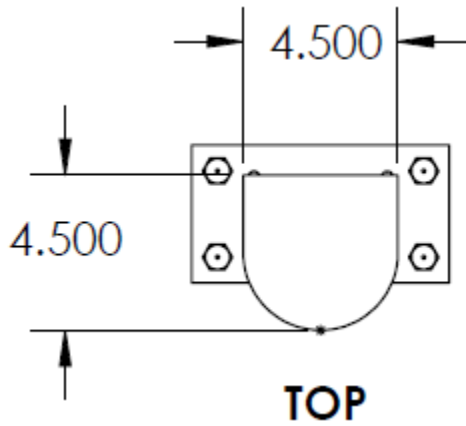
\*Lumens are based on Max Wattage and 3500K CCT  
 \*Specific IES Files available upon request  
 Std – Standard Offering

PAC-BLD- \_\_\_\_\_ - \_\_\_\_\_ - \_\_\_\_\_ - \_\_\_\_\_ - \_\_\_\_\_ - \_\_\_\_\_ - \_\_\_\_\_ - \_\_\_\_\_ - \_\_\_\_\_ - \_\_\_\_\_

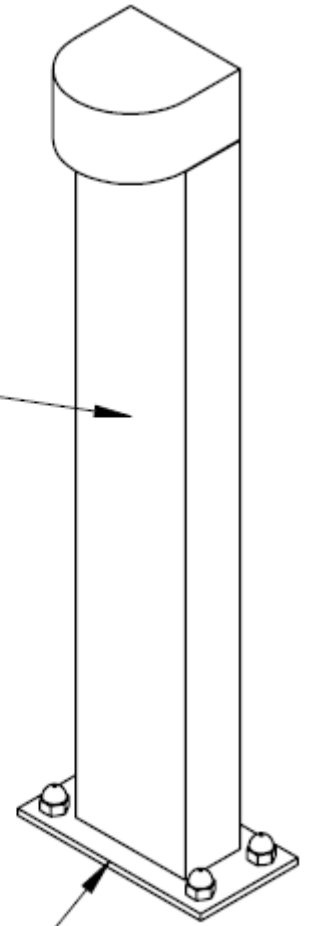
**Customization Notes:**

▶▶▶ Info on this spec sheet will change without notice as product development is an ongoing process.

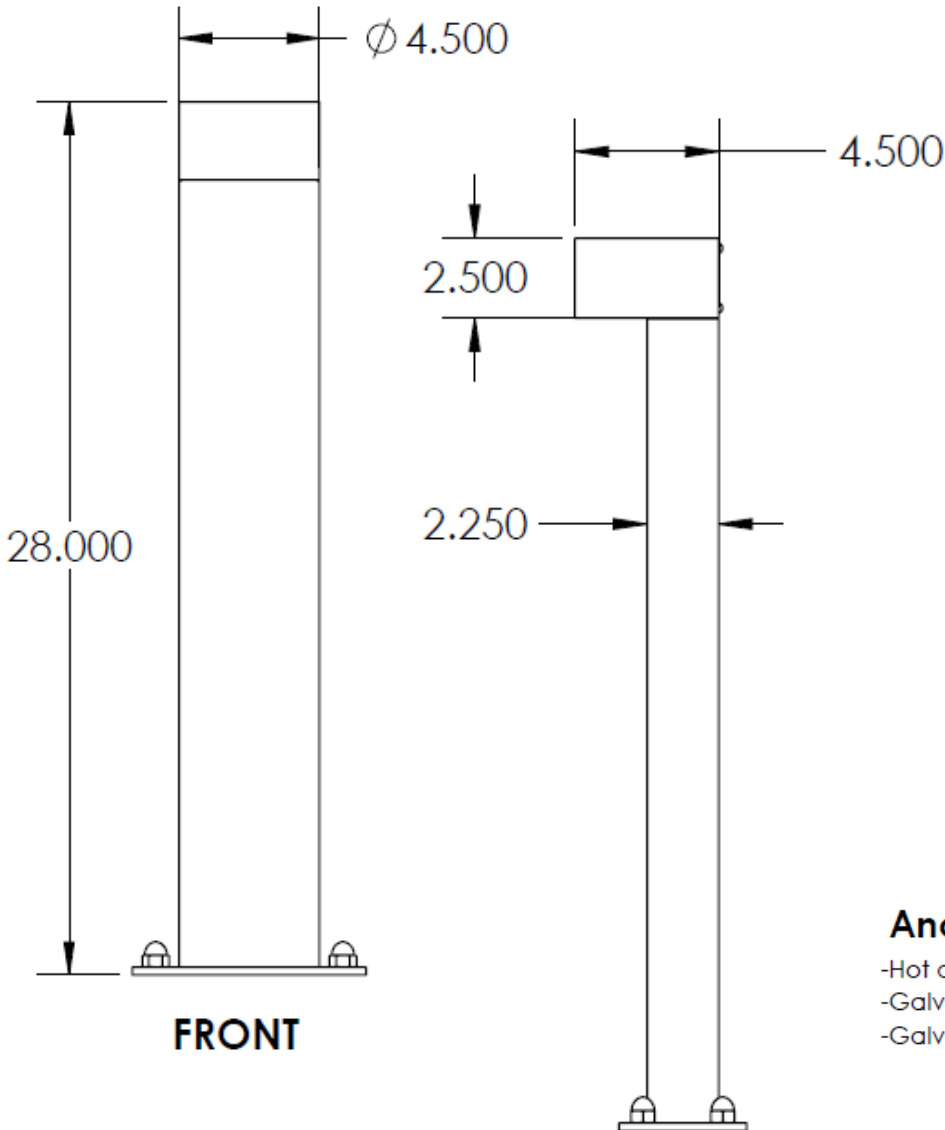
**Dimensions & Mounting** (measurements in inches; drawings are not to scale)



**ALUMINUM  
FIXTURE  
HOUSING**

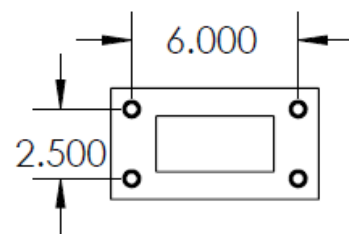


**BASE PLATE**



**Anchoring Details**

(measurements in inches; drawings are not to scale)



**Anchorbolt Size: 1/2" X 12" X 1-3/8"**

- Hot dipped Galvanized anchor bolts
- Galvanized steel hex nuts
- Galvanized steel flat washers