



CUSTOM ARCHITECTURAL LIGHTING

• 120 Walker Dr, Brampton, ON L6T 4G9 CANADA

Toll free: 1 877 765 3722

Fax: 905 457 1115

soleracorp.com

Date: _____

Type: _____

Project: _____

NEMO-BLD BOLLARD

Modern & simplistic with slanting design on the shaft. Body has smooth and sharp corners.

Construction: Fixture housing constructed from 6061 aluminum alloy. Weatherproof silicon gasket seal for all weather protection. Stainless steel external hardware for corrosion resistance.

Mounting: Aluminum base anchors to 4 flush-mounted bolts.

Lens: Opal lens

Lamp: High power LEDs with 50,000 hrs. rated lamp life L70% lumen maintenance
3000K, 3500K, 4000K, 5000K color temperature

Light distribution: Type V

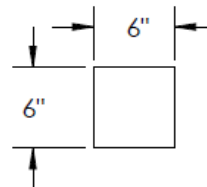
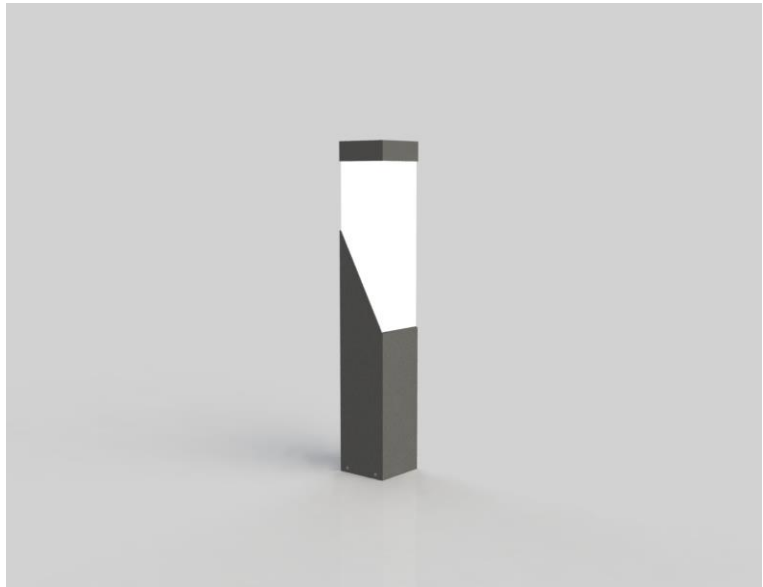
Driver: 60Hz, 120-277V / 347V electronic LED driver, thermally protected with low THD. Operating temperature ranging between -10°C to 50°C.

Options: 0-10V Dimming, 10KV/20KV surge protector, ground fault receptacle, tamperproof hardware, tamperproof bits, color changing LED, custom height (contact Factory)

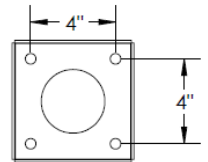
Finish: Black, White, Silver Gray, Bronze
(Custom color available upon request)

Listing: Complies with CSA & UL Standards,
Approved for indoor and outdoor location.

Warranty: [5-year limited warranty](#)

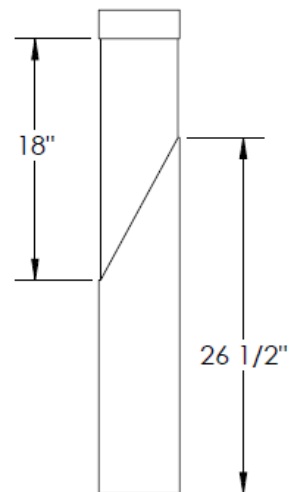
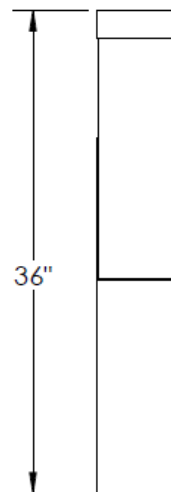


Anchoring Details:



Anchorbolt Size: 1/2" X 12" X 1-3/8"

- Hot dipped Galvanized anchor bolts
- Galvanized steel hex nuts
- Galvanized steel flat washers



[illegible]

Name	Height (inches)	Light Engine	Color Temperature	Electrical	Mounting	Lens	Light Pattern	Options		Finish
NEMO-BLD	36	25 W LED (max)	3000K 3500K 4000K 5000K	UNV HLV	ABT	OPL	TY5	TP TS DM GFR	SP10 SP20 RGBW	BL BZ WH SG
Contact Factory for custom height										CC

Notes:

- 3000K – 152 Source lm/w
- 3500K – 157 Source lm/w
- 4000K – 160 Source lm/w
- 5000K – 160 Source lm/w
- UNV – Universal voltage (120V - 277V)
- HLV – 347V line voltage
- ABT – Anchors, bolts, template
- OPL – Opal lens
- TY5 – Type V light distribution
- TP – Tamperproof hardware
- TS – Tamperproof bits
- DM – 0-10V dimming
- GFR – Ground fault receptacle
- SP10 – Surge protector up to 10 KV
- SP20 – Surge protector up to 20 KV
- RGBW – color changing programmable LED
- BL – Minitex black
- BZ – Minitex bronze
- WH – Minitex white
- SG – Minitex silver gray
- CC – Custom color (Confirm RAL No. prior to production)