

Date:

Type:

Project:



JUPY LIGHT COLUMN

The JUPY Light Column features decorative rings encasing the high impact opal acrylic lens that sits on top of an extruded aluminum shaft. The standard offering is 8" OD only. Contact Solera for custom shaft length.

Name	Diameter	Height	Lamping*	Lumens*	Color Temp	Electrical		Mounting	
JUPY	8	12ft	60W LED (max)	10553	3000K 3500K 4000K 5000K	UNV HLV	120-277V 347-480V	ABT	Anchors, Bolts & Template
Contact for custom lengths									

Lens		Light Pattern		Options			Finishes	
OAL	High impact opal acrylic lens (Std)	TY5	Type V (Std)	TP/TS DM SF GFR PC RGBW 1XBA 2XBA	Tamperproof Hardware & Screws 0-10V Dimming Single Fuse Ground Fault Receptacle Button photocell, voltage specific Color changing LEDs Single fixed banner arm Double fixed banner arm		BL BZ WH SG CC	Black Bronze White Silver Grey Custom Color
Contact for custom design options								

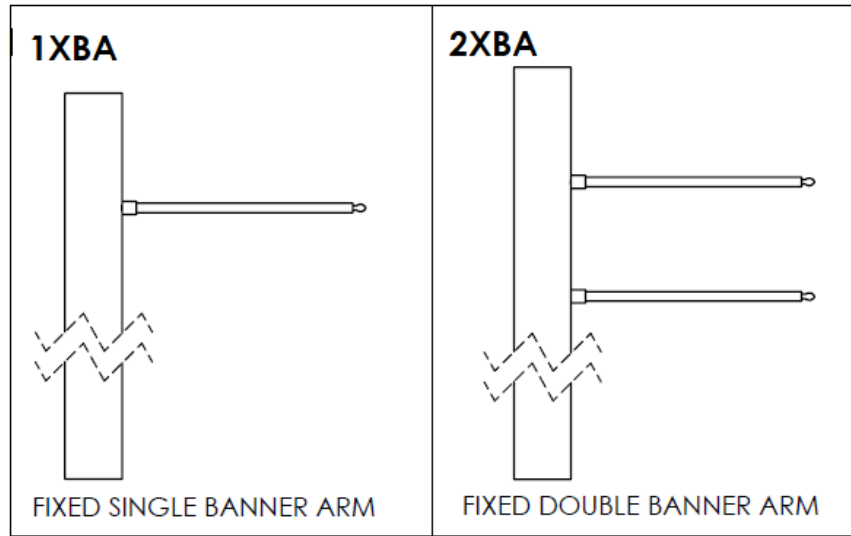
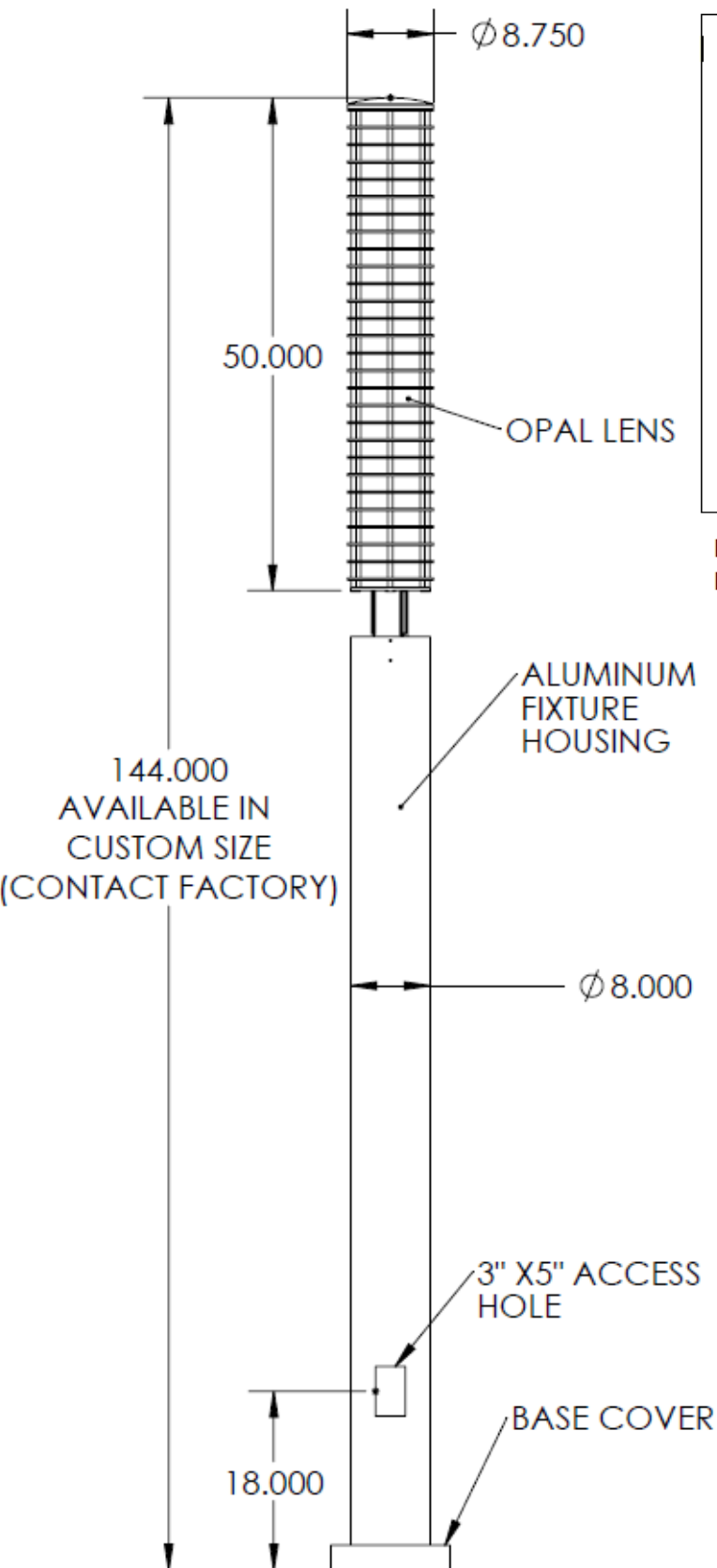
*Lumens are based on Wattage & 5000K
*Specific IES File available upon request
Std – Standard Offering

JUPY- _____

Customization Notes:

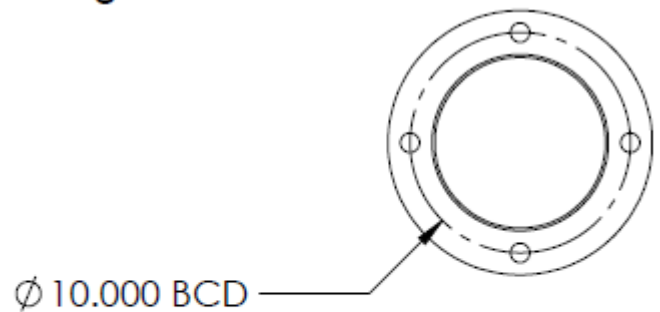
▶▶▶ Info on this spec sheet will change without notice as product development is an ongoing process.

Dimensions & Mounting (drawings are not to scale; measurements in inches)



NOTE: BANNER ARM DISTANCE MUST BE CONFIRMED PRIOR TO PRODUCTION

Anchoring Details:



Anchorbolt Size: 3/4" X 18" X 3-3/4"

- Hot dipped Galvanized anchor bolts
- Galvanized steel hex nuts
- Galvanized steel flat washers