

Date:

Type:

Project:

### BORA LIGHT COLUMN

A variation of the circular light column, BORA features a high impact clear diffuser on top of 6061-T6 extruded aluminum shaft. Designed to add simple contemporary aesthetic for outdoor pathways. Contact Solera for custom shaft lengths.



Name	Diameter	Height	Lamping & Lumens*		Color Temp	Electrical		Mounting	
BORA	6	12ft	33W LED	2700	3000K	UNV	120-277V	ABT	Anchors, bolts, & template
		15ft	48W LED	6930	3500K 4000K 5000K	HLV	347-480V		
		Contact for other lengths & sizes		Contact for other wattages & lumens					

	Lens	Light Distribution		Options			Finishes	
CL	High impact UV stabilized clear acrylic lens	TY5	Type V (Std)	TP/TS	Tamperproof Hardware & Screws	BL	Black	
		TY2	Type II	DM		0-10V Dimming	BZ	Bronze
				SF	Single Fuse	WH	White	
				GFR	Ground Fault Receptacle	SG	Silver Grey	
				PC	Button photocell, voltage specific			
				MSD	Motion sensor with step dimming	CC	Custom Color	
				1XBA	Single fixed banner arm			
				2XBA	Double fixed banner arms			
Contact Solera for banner arm length								

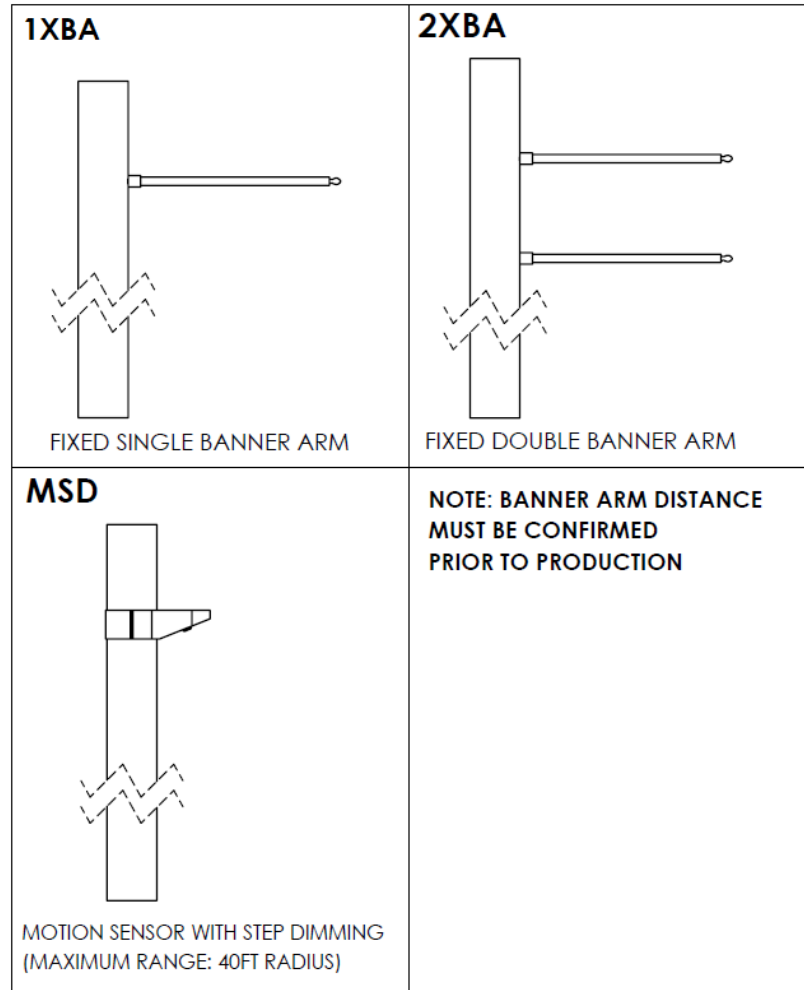
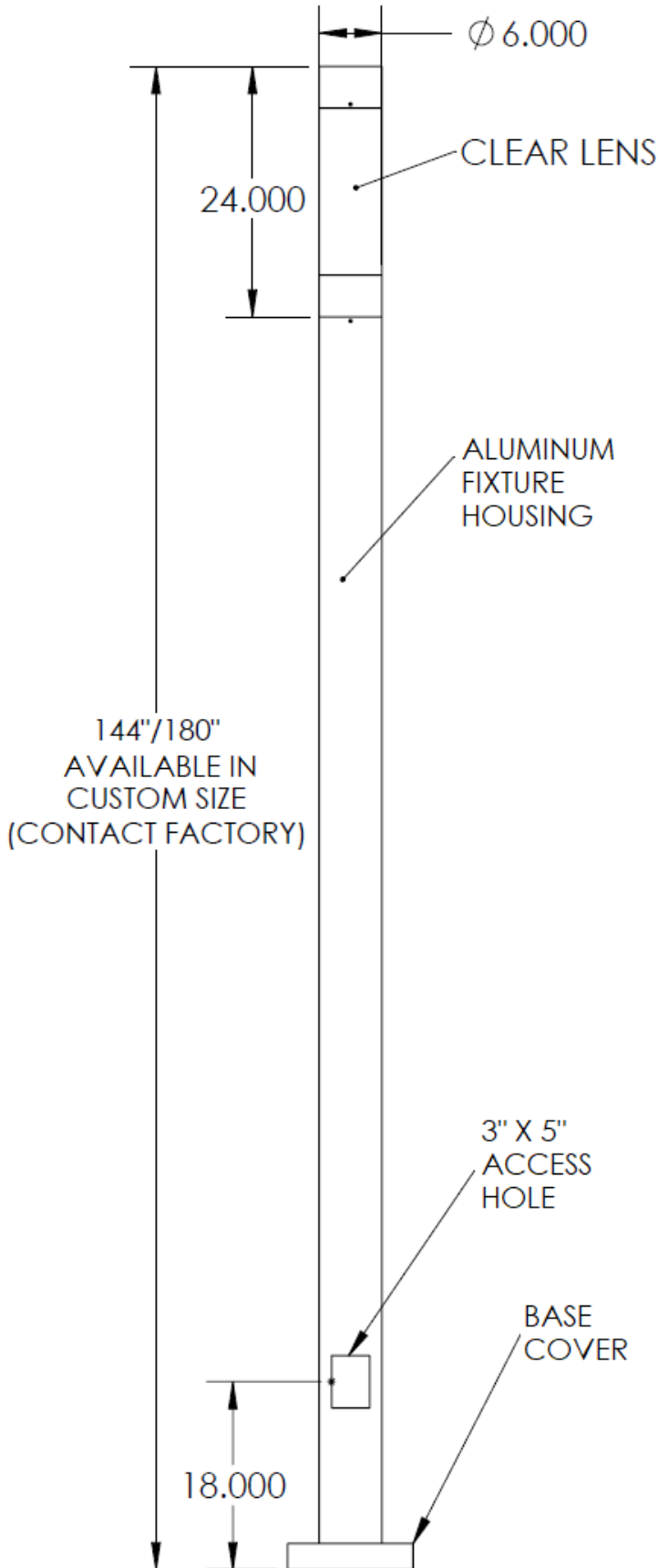
\*Lumens are based on Wattage & 5000K  
 \*Specific IES File available upon request  
 Std – Standard Offering

BORA- \_\_\_\_\_

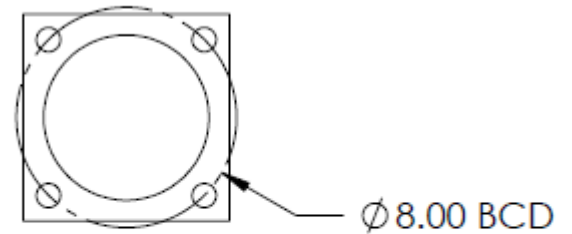
**Customization Notes:**

▶▶▶ Info on this spec sheet will change without notice as product development is an ongoing process.

**Dimensions & Mounting** (drawings are not to scale; measurements in inches)



**Anchoring Details:**



**Anchorbolt Size: 3/4" X 18" X 3-3/4"**

- Hot dipped Galvanized anchor bolts
- Galvanized steel hex nuts
- Galvanized steel flat washers

**BORA-6-12**