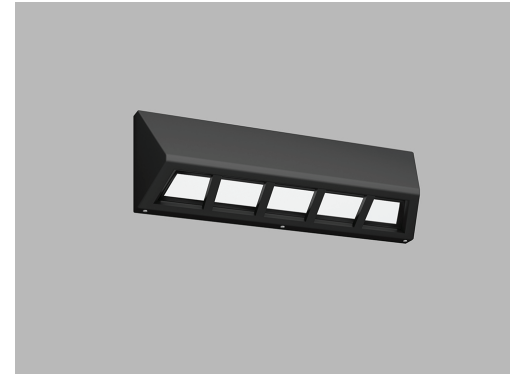




Date
Quote #
Project Name
Type



BANE - Wall Mount

Description:

Constructed of aluminum and an opal polycarbonate lens. Four (4) aluminum bars separates the lens for a robust glow effect. All external hardware is stainless steel.

Name - Engine - Lumens - CCT - Electrical - Mounting - Lens - Pattern - Options - Finish

Name	Light Engine	Source Lumens _{(LED)(5000K)}	Color Temp	Electrical
BANE	12W LED (Max)	1680	3000K	UNV 120-277V
			3500K	HLV 347-480V
			4000K	
			5000K	

Contact for custom

Contact for custom

Contact for custom

Mounting	Lens	Light Pattern	Options	Finishes
WM Wall mount	OPL Opal polycarbonate lens (Std)	FT Forward throw	DM 0-10V dimming	Standard
			TP Tamperproof hardware	BL Black
			TS Tamperproof screws	WH White
			SF Single fuse	SG Silver Grey
				BZ Bronze
				Custom
				CC Custom Color
				See website for custom colors. Contact factory for physical samples.

- Lumens are based on max wattage & 5000K CCT
- IES files available upon request
- Std - Standard Offering

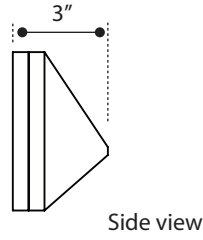
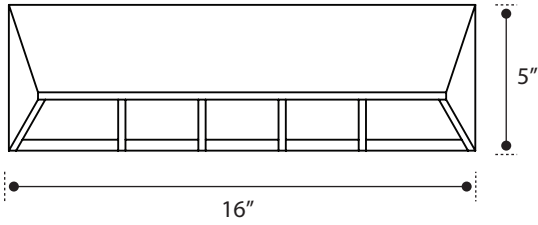




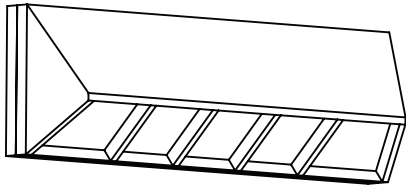
Dimensions & Mounting:

Please note that drawings are not to scale.

Front view



Side view



Isometric view

Listing:

Complies to CSA and UL standards.

Polar Graph:

