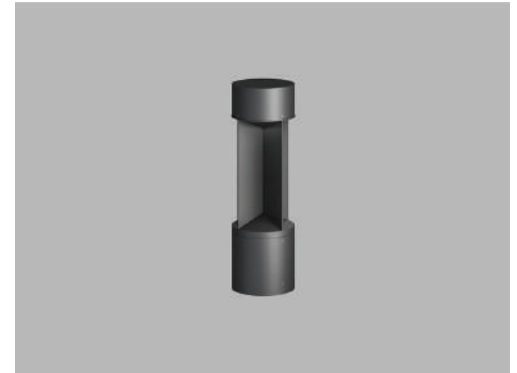




Date
Quote #
Project Name
Type



SRB8-F-X - Bollard

Description:

All aluminum construction, the luminaire consists of a flat cap and extruded shaft with 4 sides. Height of the bollard is customizable.

Name	Engine	Lumens	CCT	Electrical	Mounting	Lens	Pattern	Options	Finish
<input type="text"/>	<input type="text"/>	<input type="text"/>	<input type="text"/>	<input type="text"/>	<input type="text"/>	<input type="text"/>	<input type="text"/>	<input type="text"/>	<input type="text"/>

Name	Light Engine	Source Lumens _{(LED)(5000K)}	Color Temp	Electrical
SRB8-F-X	20 W LED (Max)	2814	3000K	UNV 120-277V
			3500K	HLV 347-480V
			4000K	
			5000K	

Contact for custom

Contact for custom

Contact for custom

Mounting		Lens		Light Pattern		Options		Finishes	
ABT	Anchor, bolts & template	CPL	Clear polycarbonate lens (Std)	TY5	Type V (Std)	MS	Motion sensor	BL	Black
				180	180 degree	SD	Step dimming	WH	White
								SG	Silver Grey
								BZ	Bronze
						TS	Tamperproof screws	CC	Custom Color
						PC	Button photocell	See website for custom colors. Contact factory for physical samples.	

- Lumens are based on max wattage & 5000K CCT
- IES files available upon request
- Std - Standard Offering

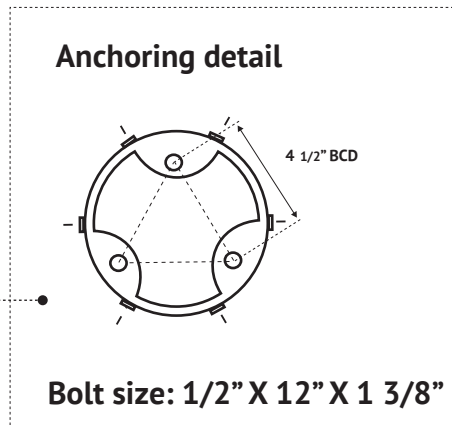
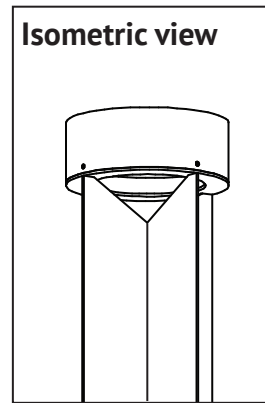
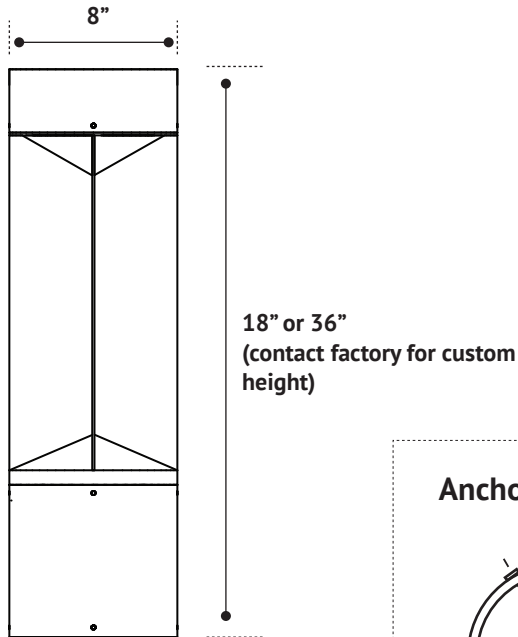




Dimensions & Mounting:

Please note that drawings are not to scale.

Side view



Listing:

Complies to CSA and UL standards.

Polar Graph:

TY5

