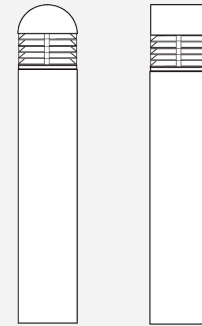




<b>Date:</b>
<b>Type:</b>
<b>Project:</b>



**SRB6D/SRB6F - BOLLARD**

**DESCRIPTION:**

Their vandal resistant construction makes them ideal for use in high traffic, high abuse areas. All external hardware is stainless steel. Available as a Flat or Dome top

Name	Lamping		Lumens	Color Temp	Electrical		Mounting	
SRB6D	6D/6F - HBD or LVR	36 LED (Max)	4672 (HBD) 4523 (Type V)	3000K	UNV	120-277V	ABT	Anchor, Bolts & Template
SRB6F				4000K	HLV	347-480V		
	6D/6F - DC or PRA	70MH 42PLT		5000K	TT	Tri-Tap (HID)		
				MT	Multi-Tap (HID)			
	*Contact for other wattages		*Contact for custom	*Specify other			*Contact for other lengths	

Lens		Light Pattern		Options		Finishes		
OPL	Opal Polycarbonate Lens (Std)	HBD3	Cast Aluminum Louvers, Type III	TP	Tamperproof Hardware	BL	Black	
CG	Clear Glass Lens	HBD5	Cast Aluminum Louvers, Type V	TS	Tamperproof Screwdriver	WH	White	
FG	Frosted Glass Lens	PRA3	Prismatic Refractor, Type III	PC	Button Photocell	SG	Silver Grey	
		PRA5	Prismatic Refractor, Type V	SF	Single Fuse	BZ	Bronze	
				HCO	House Side Cutoff			
							*See finishes brochure for custom	

✦ Lumens are based on Max Wattage and 5000K CCT

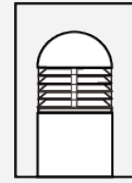
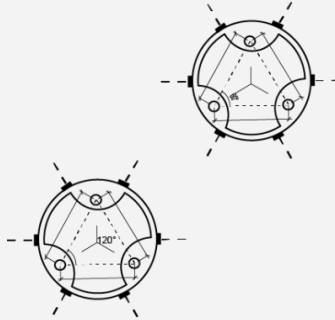
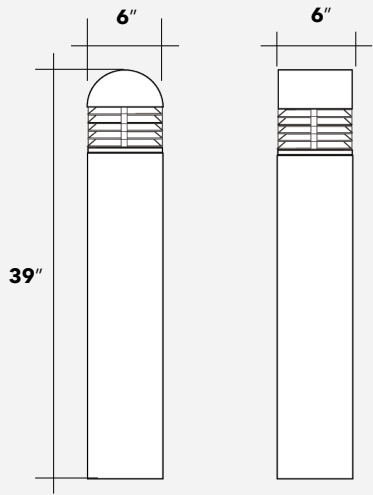
Std - Standard Offering

SRB6- \_\_\_\_\_

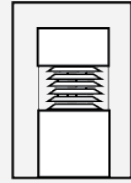
**Customization Notes:**

▶▶▶ Info on this spec sheet will change without notice as product development is an ongoing process.

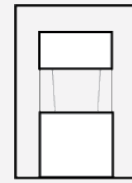
### Dimensions & Mounting (drawings are not to scale)



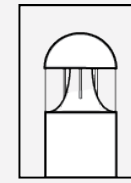
HBD



LVR

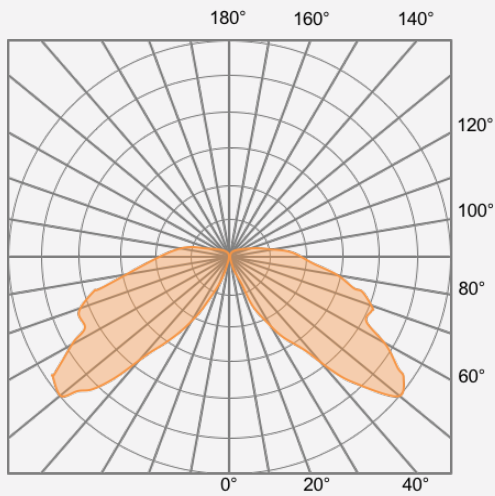


PRAIII/PRAV



DCV

### Polar Graph



HBD, Type V