

Date: _____

Type: _____

Project: _____



SINU BOLLARD

Round bollard with flat top and deco bars providing ample symmetrical light patterns for walkways and pathways. Our standard bollard height is 42” but specifiable to other height & feature options.

Name	Lamping	Lumens*	Color Temp	Electrical		Mounting
SINU	40W LED	3691	3000K	UNV	120-277V	ABT Anchors, Bolts & Template
	30W LED	2683	4000K	HLV	347-480V	
	15W LED	1348	5000K			
Contact for other wattages		Contact for custom	Specify other			

Lens	Light Pattern		Options			Finishes	
CPL	Clear Lens	TY5	Type V – DCO (Std)	TP	Tamperproof Hardware	BL	Black
		TY4	Type IV – Semi cut-off	TS	Tamperproof Screws	WH	White
		TY3	Type III – DCO	DM	0-10V Dimming	SG	Silver Grey
				PC	Button Photocell	BZ	Bronze
				SF	Single Fuse	CC	Custom Color
				GFR	Ground Fault Receptacle		

[See finishes info on website](#)

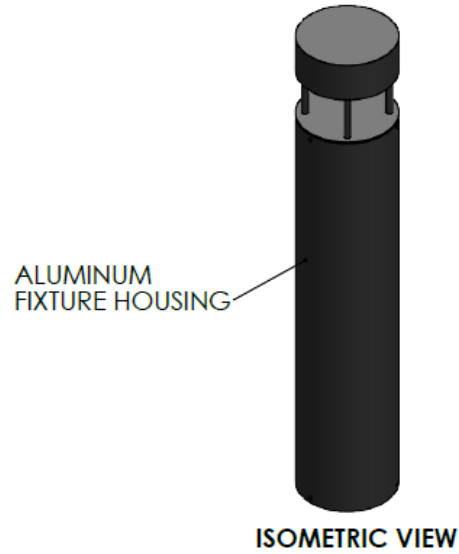
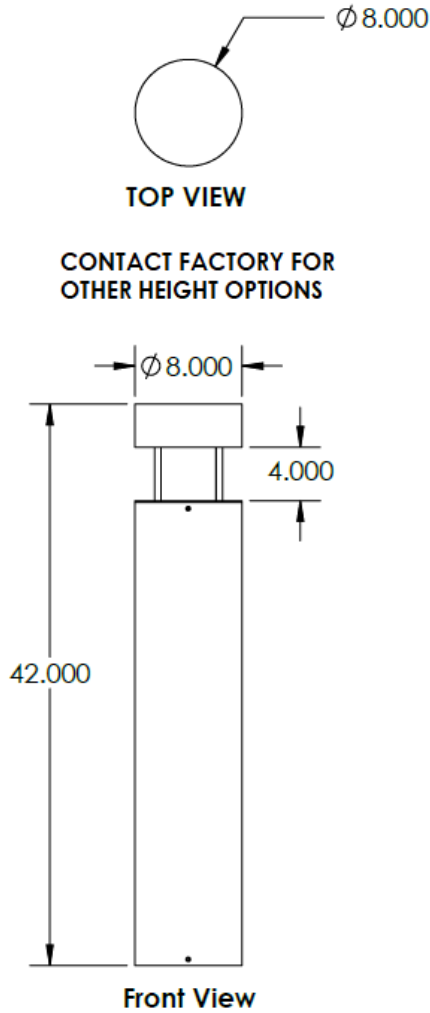
*Lumens are based on Wattage, Type V Distribution, and 5000K CCT
 Std – Standard Offering
 DCO – Dark Sky Compliant

SINU- _____

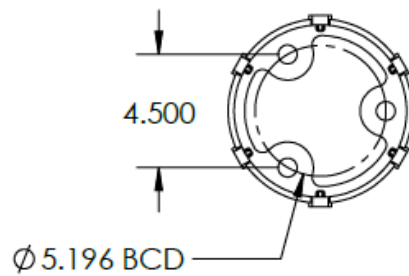
Customization Notes:

→ Info on this spec sheet will change without notice as product development is an ongoing process.

Dimensions (drawings are not to scale; all dimensions in inches)



Anchoring Details (not to scale; dimensions in inches)



Anchorbolt Size: 1/2" X 12" X 1-3/8"

- Hot dipped Galvanized anchor bolts
- Galvanized steel hex nuts
- Galvanized steel lock washers
- Galvanized steel flat washers

Polar Graph

