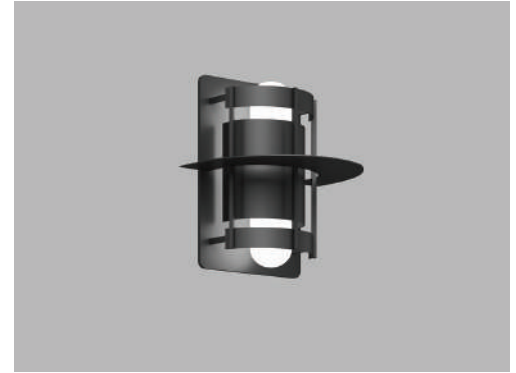




Date
Quote #
Project Name
Type



SAT - Wall Mount

Description:

Fabricated aluminum housing with 3 vertical trusses supporting upper and lower glare shields and one center disk. Lamp is enclosed in a prismatic bullet lens (Std). Gasketed connections for full weather-proof protection.

Name - Engine - Lumens - CCT - Electrical - Mounting - Lens - Pattern - Options - Finish

Name	Light Engine	Source Lumens _{(LED)(5000K)}	Color Temp	Electrical
SAT	2X20W LED (Max)	5388	2700K	UNV 120-277V
	70MH		3000K	HLV 347-480V
	2PLT42		3500K	TT Tri-Tap(HID)
			4000K	MT Multi-Tap(HID)
			5000K	
	Contact for custom	Contact for custom	Contact for custom	

Mounting	Lens	Light Pattern	Options	Finishes
WM Wall mount	PGB Prismatic glass bullet (Std)	UD Up and down light (Std)	PC Button photocell	Standard
	CGB Clear glass bullet	D Down light only	SF Single fuse	BL Black
		U Up light only	DM 0-10V dimming	WH White
			OCD Off center disk	SG Silver Grey
			WL Wet location	BZ Bronze
			TP Tamperproof hardware	Custom
				CC Custom Color
				See website for custom colors. Contact factory for physical samples.

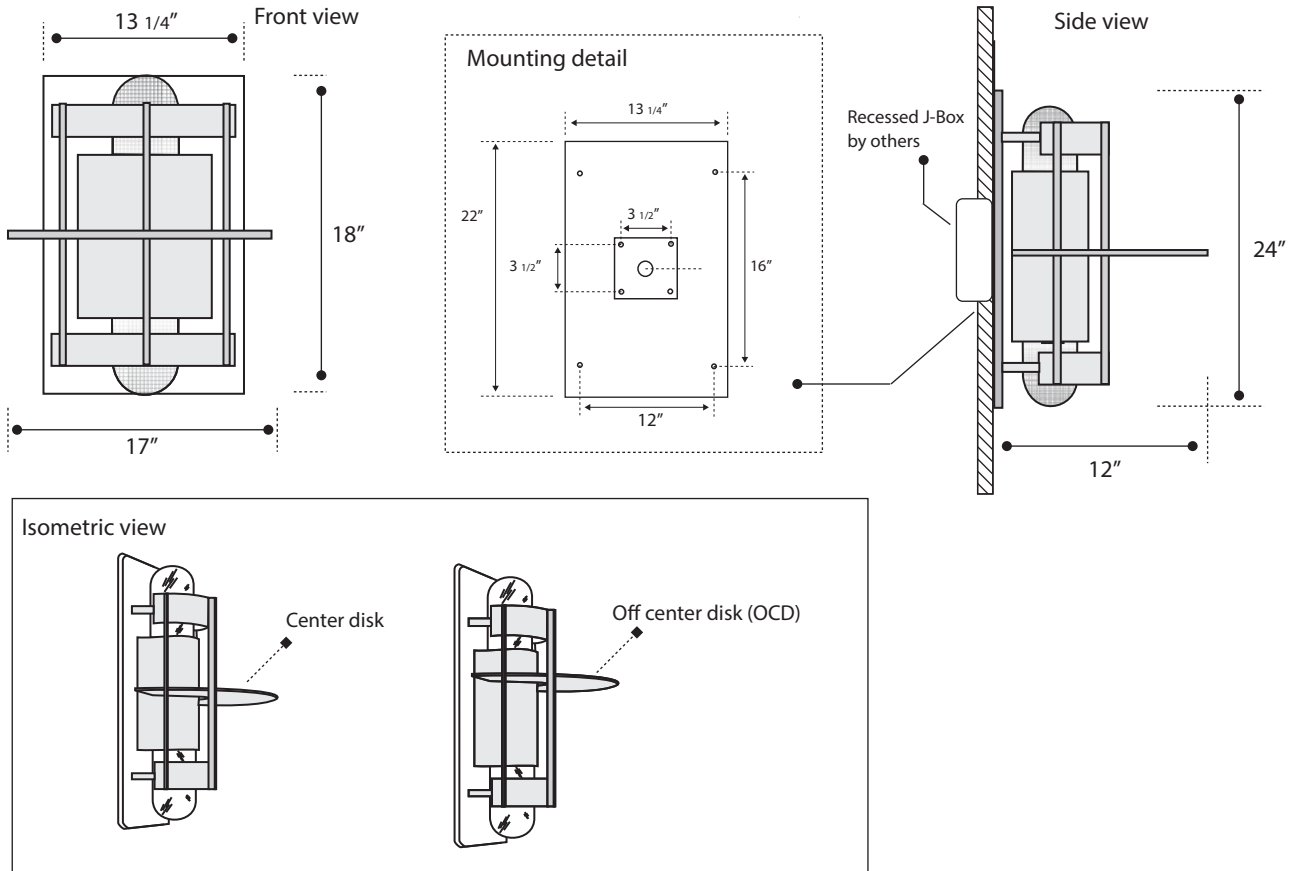
- Lumens are based on max wattage & 5000K CCT
- IES files available upon request
- Std - Standard Offering





Dimensions & Mounting:

Please note that drawings are not to scale.



Listing:

Complies to CSA and UL standards.

Polar Graph:

