



<b>Date:</b>
<b>Type:</b>
<b>Project:</b>



**QUAD-O - LIGHT COLUMN**

**DESCRIPTION:**

Heavy duty extruded aluminum (6061-T6 Alum) housing construction with clear acrylic lens. Silicone gasket for full weather seal and to protect from bugs and dust.

Name	Lamping		Lumens	Color Temp	Electrical		Mounting	
QUAD-O-10	10	48 LED (Max)	8448	3000K	UNV	120-277V	ABT	Anchor, Bolts & Template
QUAD-O-16	16	72 LED (Max)	12672	4000K	HLV	347-480V		
	Red, Green & Blue LEDs			5000K				
	*Contact for other wattages		*Contact for custom	*Specify other				

Lens		Light Pattern		Options		Finishes		
OAL	Opal Acrylic Lens (Std)	TY5	Type V (Std)	TP	Tamperproof Hardware	BL	Black	
PR	Prismatic Lens (K12)			TS	Tamperproof Screwdriver	WH	White	
				GFR	Ground Fault Receptacle	SG	Silver Grey	
				USB	USB Charger	BZ	Bronze	
				COM	Intercom			
				PC	Button Photocell			
				HCO	House Side Cutoff			
							*See finishes info on website	

✦ Lumens are based on Max Wattage and 5000K CCT

Std - Standard Offering

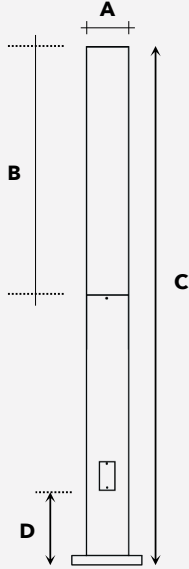
QUAD-O - \_\_\_\_\_

**Customization Notes:**

▶▶▶ Info on this spec sheet will change without notice as product development is an ongoing process.

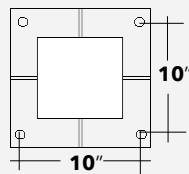
### Dimensions & Mounting (drawings are not to scale)

Side View

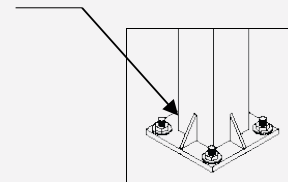


QUAD	A	B	C	D
QUAD-O-10	6"/8"	48"	120"	24"
QUAD-O-16	6"/8"	72"	196"	24"

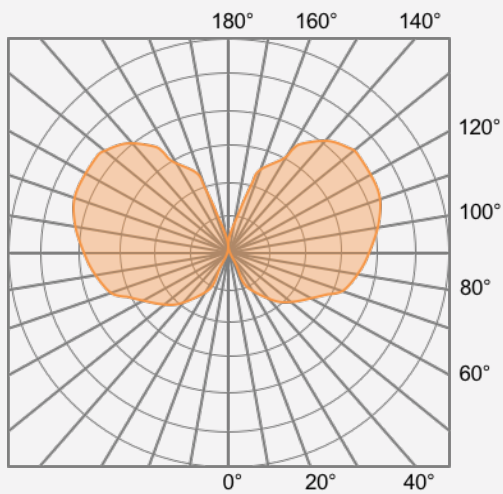
Anchoring Detail



Ø 1/4" DRAINAGE HOLE



### Polar Graph



TYPE V