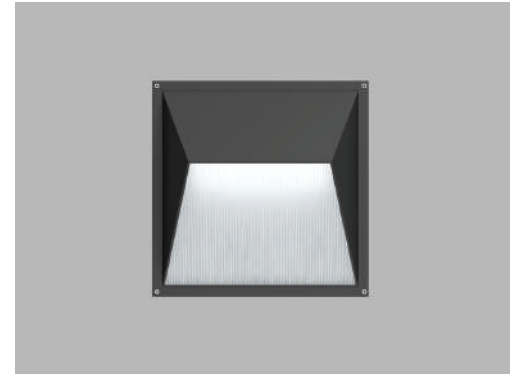




Date
Quote #
Project Name
Type



LLA - Wall Recessed

Description:

LRA is designed for step light applications. Made of fabricated aluminum and contains a tempered glass lens which is silicone sealed for weatherproofing.

Name	Engine	Lumens	CCT	Electrical	Mounting	Lens	Pattern	Options	Finish
<input type="text"/>	<input type="text"/>	<input type="text"/>	<input type="text"/>	<input type="text"/>	<input type="text"/>	<input type="text"/>	<input type="text"/>	<input type="text"/>	<input type="text"/>

Name	Light Engine	Source Lumens _{(LED)(5000K)}	Color Temp	Electrical
LLA	48W LED (Max)	7357	3000K	UNV 120-277V
	70 MH		3500K	HLV 347-480V
	70 HPS		4000K	TT Tri-Tap(HID)
	CFL42		5000K	MT Multi-Tap(HID)

Contact for custom

Contact for custom

Contact for custom

Mounting	Lens	Light Pattern	Options	Finishes
R Recessed in dry wall	LPL Linear prismatic lens (Std)	FT Forward throw	TP Tamperproof hardware	BL Black
RTC Recessed in concrete	LOF Louvered front face		TS Tamperproof screws	WH White
WM Wall mount			EM Emergency battery	SG Silver Grey
			WL Wet location	BZ Bronze
			SF Single fuse	

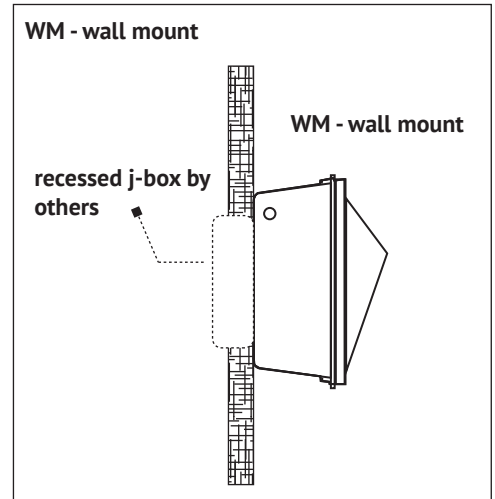
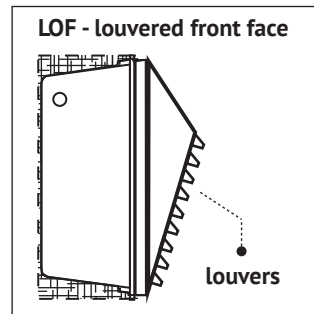
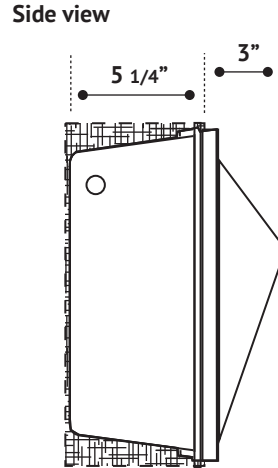
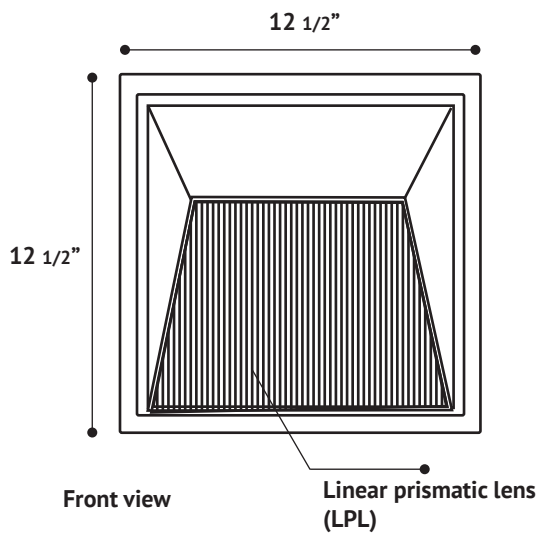
- Lumens are based on max wattage & 5000K CCT
- IES files available upon request
- Std - Standard Offering





Dimensions & Mounting:

Please note that drawings are not to scale.



Listing:

Complies to CSA and UL standards.

Polar Graph:

