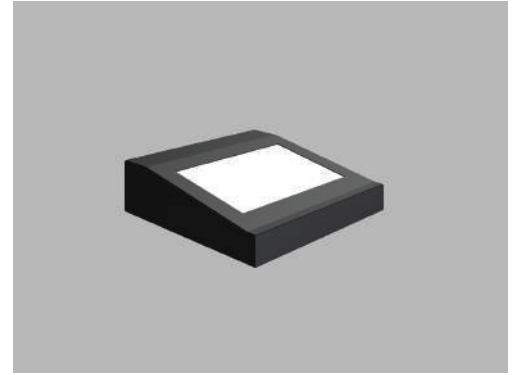




Date
Quote #
Project Name
Type



## EXIBRA - Wall Mount

### Description:

Extruded aluminum housing with construction with aluminum end caps and a silicone sealed lens. All external hardware is stainless steel.

Name  - Engine  - Lumens  - CCT  - Electrical  - Mounting  - Lens  - Pattern  - Options  - Finish

Name	Light Engine	Source Lumens <sub>(LED)(5000K)</sub>	Color Temp	Electrical
EXIBRA-S	S 70W LED (Max)	9360	2700K	UNV 120-277V
EXIBRA-M	M 120W LED (Max)	15600	3000K	HLV 347-480V
EXIBRA-L	L 320W LED (Max)	33264	3500K	
			4000K	
			5000K	

Contact for custom

Contact for custom

Contact for custom

Mounting	Lens	Light Pattern	Options	Finishes
WM Wall mount	OPL Opal polycarbonate lens (Std)	U Up light (Std)	DM 0-10V dimming	Standard
	CPL Clear polycarbonate lens		EM Emergency battery	BL Black
	PR Prismatic Lens (K12)		TP Tamperproof hardware	WH White
			TS Tamperproof screws	SG Silver Grey
			WL Wet location	BZ Bronze
			PC Button photocell	Custom
				CC Custom Color
				See website for custom colors. Contact factory for physical samples.

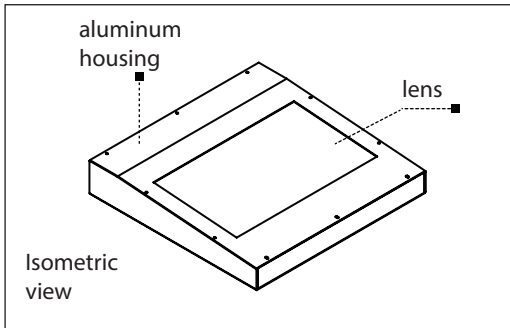
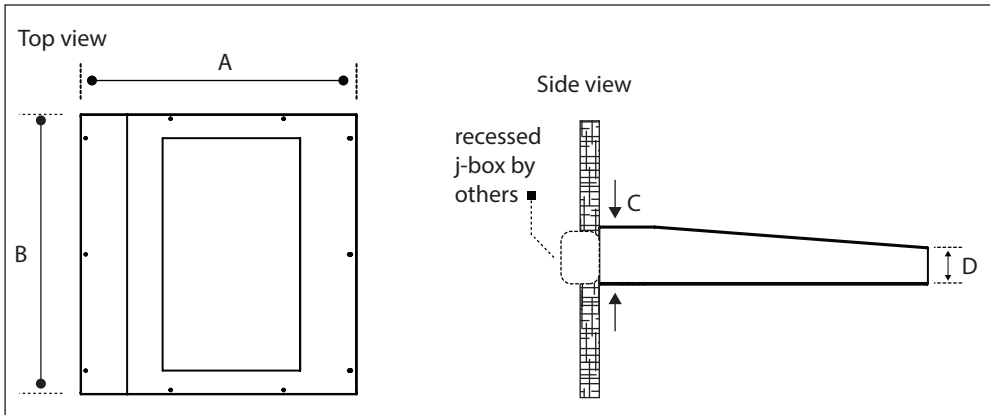
- Lumens are based on max wattage & 5000K CCT
- IES files available upon request
- Std - Standard Offering





**Dimensions & Mounting:**

Please note that drawings are not to scale.



	A	B	C	D
EXIBRA-S	24"	10"	4"	2 1/2"
EXIBRA-M	24"	17"	4"	2 1/2"
EXIBRA-L	24"	24"	4"	2 1/2"

**Listing:**

Complies to CSA and UL standards.

**Polar Graph:**

