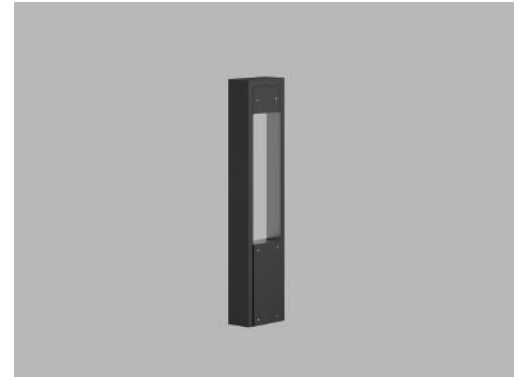




Date
Quote #
Project Name
Type



DIX - Bollard

Description:

Constructed of aluminum and swappable metal composite panels (see finishes). Silicone sealed gasketing for weather protection. Standard is monotone colored.

Name - Engine - Lumens - CCT - Electrical - Mounting - Lens - Pattern - Options - Finish

Name	Light Engine	Source Lumens _{(LED)(5000K)}	Color Temp	Electrical
DIX-B	12W LED (Max)	2112	3000K	UNV 120-277V
			3500K	HLV 347-480V
			4000K	
			5000K	

Contact for custom

Contact for custom

Contact for custom

Mounting	Lens	Light Pattern	Options	Finishes
ABT Anchor, bolts & template	OPL Opal polycarbonate lens (Std)	FT Forward throw (Std)	MS Motion sensor	Standard
			SD Step dimming	BL Black
			TP Tamperproof hardware	WH White
			TS Tamperproof screws	SG Silver Grey
			DM 0-10V dimming	BZ Bronze
			PC Button photocell	MCM Metal composite material, see {page 2} for better illustration.
			SF Single fuse	Custom
				CC Custom Color
				See website for custom colors. Contact factory for physical samples.

- Lumens are based on max wattage & 5000K CCT
- IES files available upon request
- Std - Standard Offering





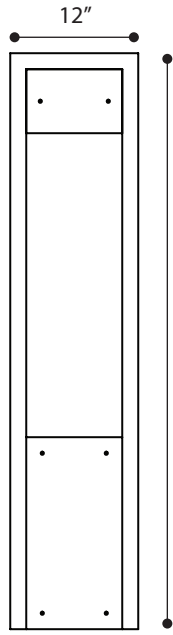
Dimensions & Mounting:

Please note that drawings are not to scale.

Side view



Front view



36"

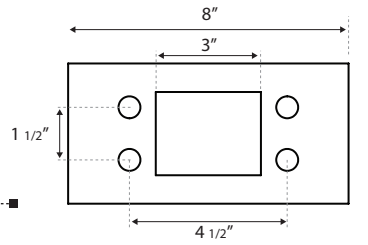
Panels can be MCM - metal composite material (contact factory for color chart).

1	2	3	4	5	6	7	8
9	10	11	12	13	14	15	16

1. Hazelnut Mica 5. Champagne Metallic 9. Brushed 50 13. Rusted Metal
 2. Driftwood Mica 6. Sunrise Silver Metallic 10. Brushed Stainless 14. Ocean
 3. Russet Mica 7. Brilliant Silver Metallic 11. Brushed Carbon 15. Cupral
 4. Silver Metallic 8. Reflect Mirror 12. Zinc 16. Sakura

Isometric view

Anchoring detail



Bolt size: 1/2" X 12 1/2" X 1 3/8"

Listing:

Complies to CSA and UL standards.

Polar Graph:

