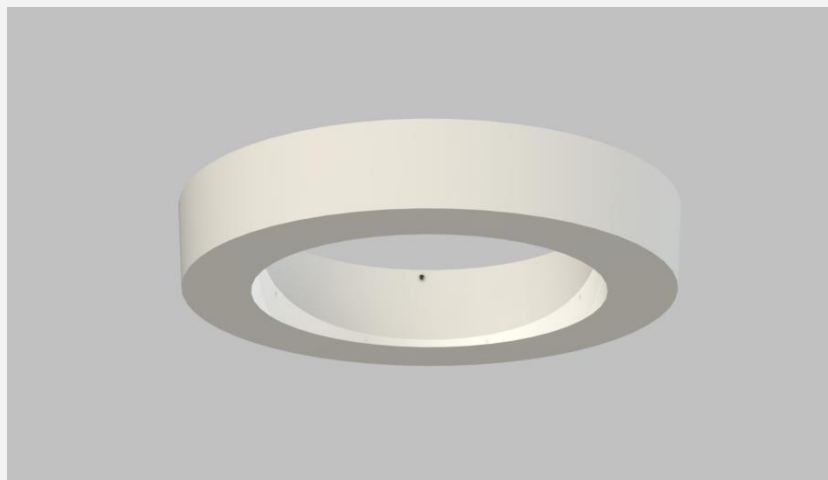


Date:
Type:
Project:



CIRC-V-SM – CEILING SURFACE MOUNT

CIRC-V-SM is a circular ceiling surface luminaire that consists of two distinct pieces: the aluminum plate on top and the one-piece molded opal lens at the bottom. The driver is remote. The lens is standard at 4" high but can be made in various diameters and customized as laminate or vinyl finish.

Name	Lamping			Fixture Lumens*		Color Temp	Electrical		Mounting	
	DIAMETER (inches)	Low Output (Std)	High Output (Option)	Low Output (Std)	High Output (Option)					
CIRC-V-SM	24	24W LED (Max)	48W LED (Max)	3308	6557	3000K	UNV	120-277V	SM	Ceiling surface mount
	36	36W LED (Max)	72W LED (Max)	4982	9883	4000K	HLV	347-480V		
	48	48W LED (Max)	96W LED (Max)	6655	13205	5000K				
	60	60W LED (Max)	120W LED (Max)	8326	16527					
	Contact Solera for other Size & Wattages									

Lens		Optics		Options		Finishes	
OAL	Molded Opal Acrylic Lens (Std)	EG	Encompassing glow (inner, outer, bottom light)	DM	0-10V Dimming	BL	Black
Contact Solera for vinyl, laminate, or other lens options				DM1	1% Dimming	WH	White
				EM	Emergency Battery	SG	Silver Gray
				RGBW	Color changing LEDs	BZ	Bronze
						CC	Custom Color
						See finishes page for custom color	

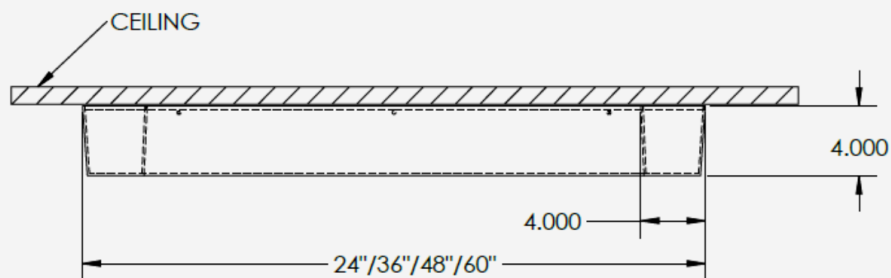
*Lumens are based on Standard maximum wattage and 5000K CCT
Std - standard

CIRC-V-SM-_____-_____-_____-_____-_____-_____-_____-_____-_____-

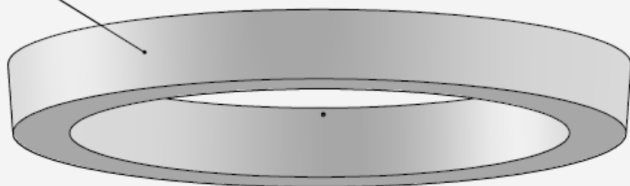
Customization Notes:

►►► Info on this spec sheet will change without notice as product development is an ongoing process.

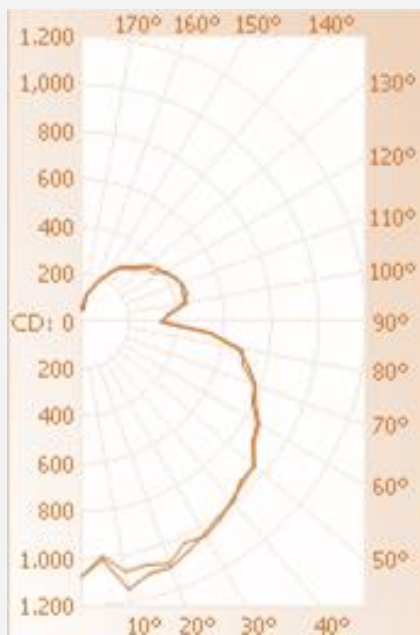
Dimensions & Mounting (drawing not to scale):



OPAL ACRYLIC LENS



Polar Graph



Encompassing Glow