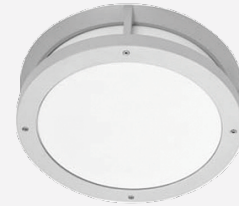




Date:
Type:
Project:



AURORA - CEILING MOUNT

DESCRIPTION:

Cast aluminum frame with one piece opal polycarbonate lens and glow band. Regressed stainless steel allen screws are standard.

Name	Lamping	Lumens	Color Temp	Electrical		Mounting	
AURORA	20W LED	3520	3000K	UNV	120-277V	CM	Ceiling Mount
	70MH		4000K	HLV	347-480V		
	100MH		5000K	TT	Tri-Tap (HID)		
	2PLT26			MT	Multi-Tap (HID)		
	*Contact Solera for other Wattages	*Contact for custom	*Specify other				

Lens		Light Pattern		Options		Finishes	
OPL	Opal Polycarbonate Lens	DS	Down & Side Light (Std)	IP65	IP65 Rated Enclosure	BL	Black
FL	Frosted Lens	D	Down Light Only	DM	0-10V Dimming	WH	White
		S	Side Light Only	ELB	Electronic HID Ballast	SG	Silver Grey
				MAL	Mesh Around Lens	BZ	Bronze
				SF	Single Fuse		
				MOD	Modified Height		
				T6	T6 G12 Operation		
				MAL	Mesh Around Lens		
						*See finishes info on website	

✦ Lumens are based on Max Wattage and 5000K CCT

Std - Standard Offering

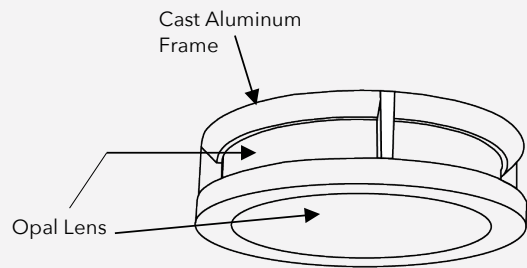
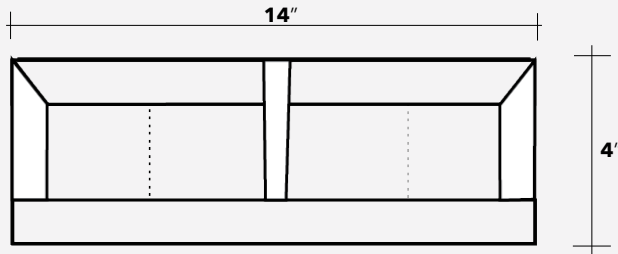
AURORA-CM - _____

Customization Notes:

▶▶▶ Info on this spec sheet will change without notice as product development is an ongoing process.



Dimensions & Mounting (drawings are not to scale)



Polar Graph

